

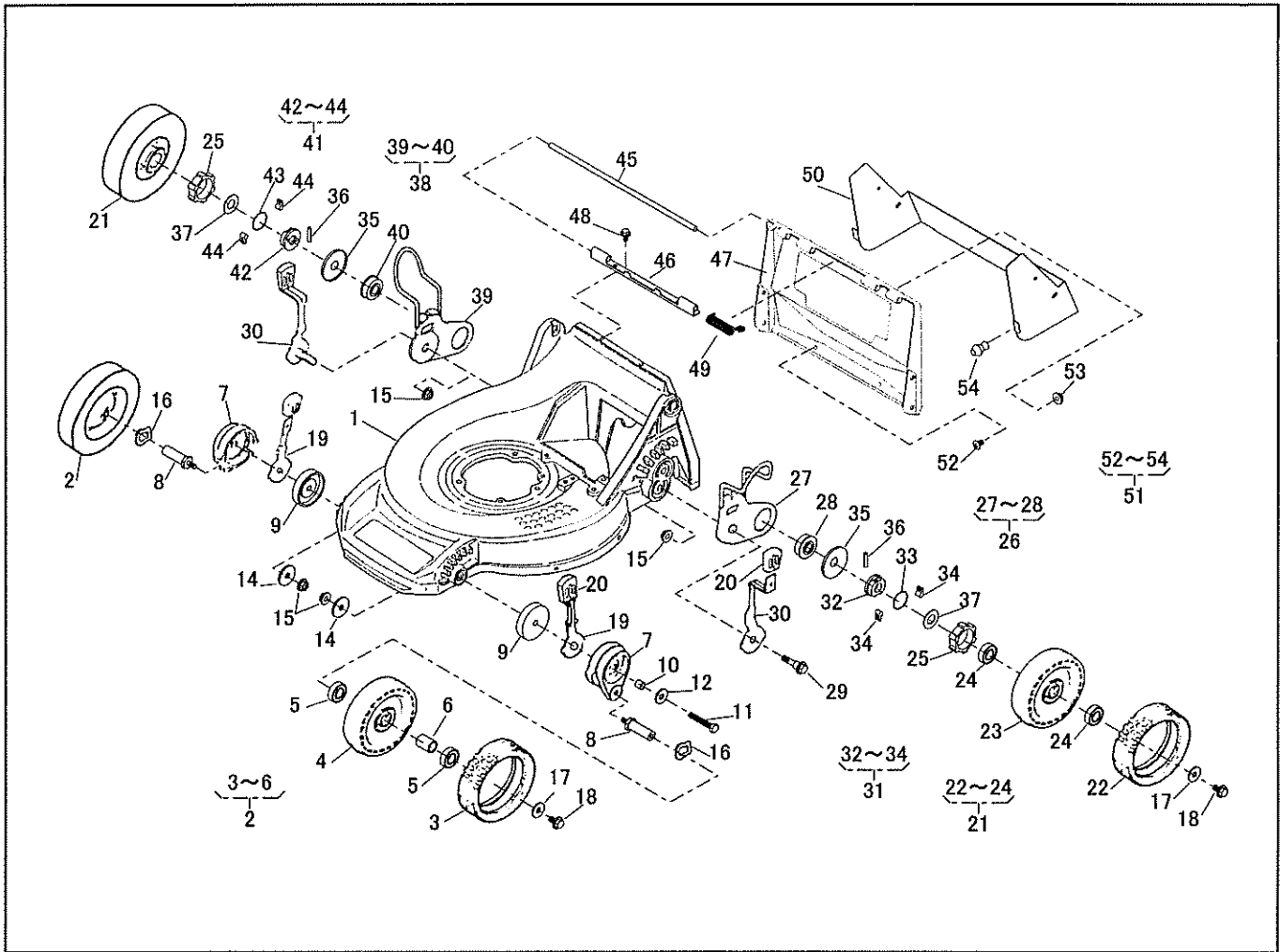


TOSAERBA SARP

SLM-5360HXA-HST

Dalla matricola 1000001 marzo 2003

ESPLOSO RICAMBI

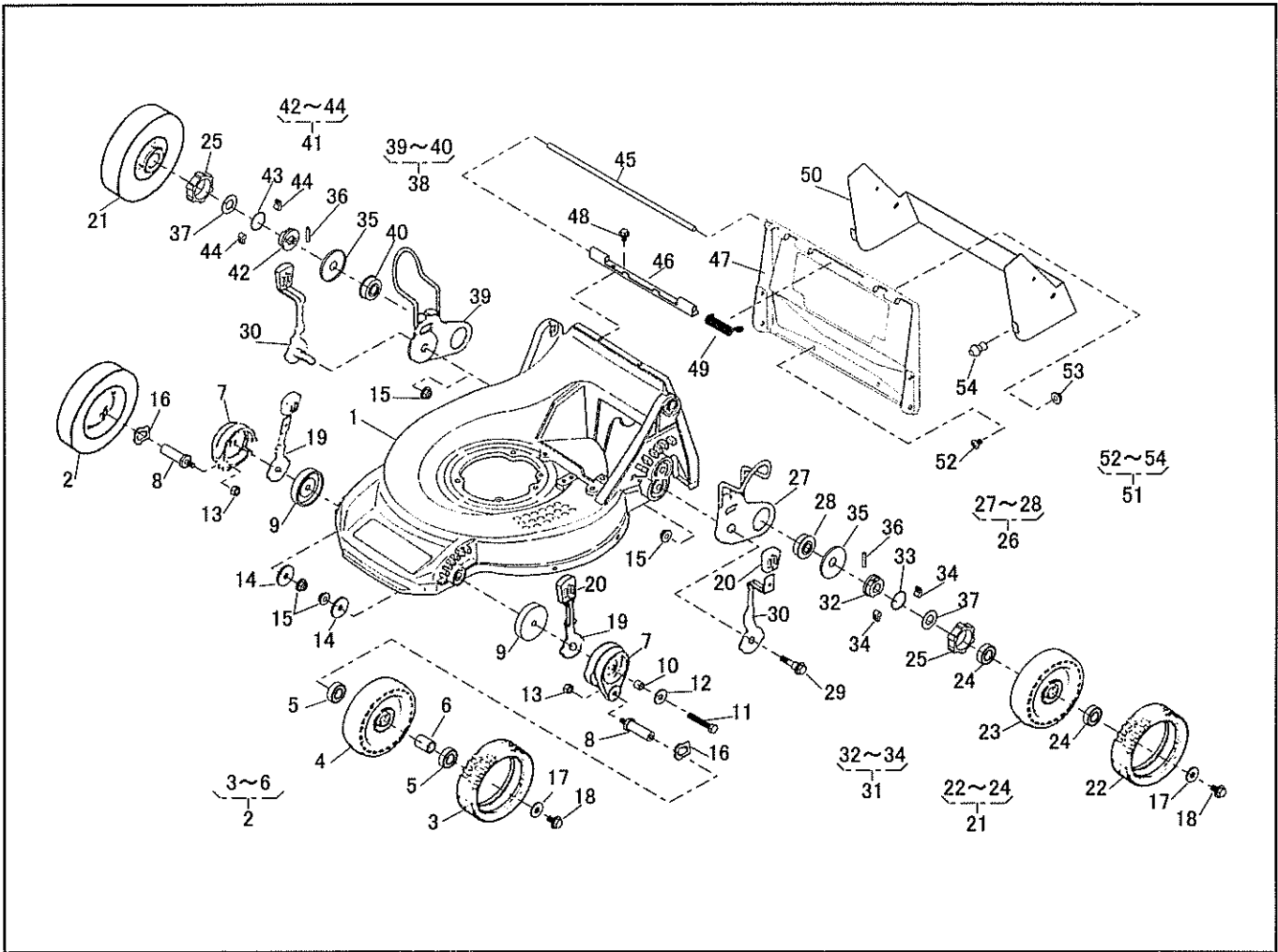


PARTS LIST

MODEL : SLM5360HXA-HST (SARP)

46014-183

| REF. No. | PARTS No. | PARTS NAME | AI-WHEEL | | PRICE() | 1/2 | | REMARKS |
|----------|--------------|--------------------|----------------|--|----------|--------------------|--|---------|
| | | | Q'TY INCLUDING | | | RECOMM.(%) Lot.100 | | |
| 1 | 51043 136 42 | HOUSING | 1 | | | 3 | | |
| 2 | 71041 135 | WHEEL ASSY(A.W.) | 2 | | | 3 | | |
| 3 | 91086 113 | TIRE | 2 | | | 15 | | |
| 4 | | WHEEL | 2 | | | - | | |
| 5 | | BEARING | 4 | | | - | | |
| 6 | | COLLAR | 2 | | | - | | |
| 7 | 11142 122 | ADJUSTER | 2 | | | 3 | | |
| 8 | 64014 332 | SHAFT | 2 | | | 3 | | |
| 9 | 11102 221 | HOLDER | 2 | | | 3 | | |
| 10 | 11083 312 | COLLAR | 2 | | | 3 | | |
| 11 | 311L 0850 | HEXAGON BOLT | 2 | | | 10 | | M8 x 50 |
| 12 | 68036 101 | WASHER | 2 | | | 3 | | |
| 13 | | | | | | | | |
| 14 | 68036 112 | WASHER | 2 | | | 3 | | |
| 15 | 569L 0800 | FLANGE NYLON NUT | 4 | | | 10 | | M8 |
| 16 | 664V 0016 | WAVE SPRING WASHER | 2 | | | 5 | | |
| 17 | 68036 101 | WASHER | 4 | | | 3 | | |
| 18 | 31057 181 | HEXAGON BOLT | 4 | | | 3 | | |
| 19 | 11150 101 09 | ADJUST LEVER | 2 | | | 5 | | |
| 20 | 36061 121 | KNOB | 4 | | | 3 | | |
| 21 | 71041 136 | WHEEL ASSY(A.W.) | 2 | | | 3 | | |
| 22 | 91086 113 | TIRE | 2 | | | 15 | | |
| 23 | | WHEEL | 2 | | | - | | |
| 24 | | BEARING | 4 | | | - | | |
| 25 | 11086 119 | STOPPER | 2 | | | 3 | | |
| 26 | 71122 101 | ADJUSTER ASSY(L) | 1 | | | - | | |
| 27 | 11142 104 | ADJUSTER | 1 | | | 3 | | |

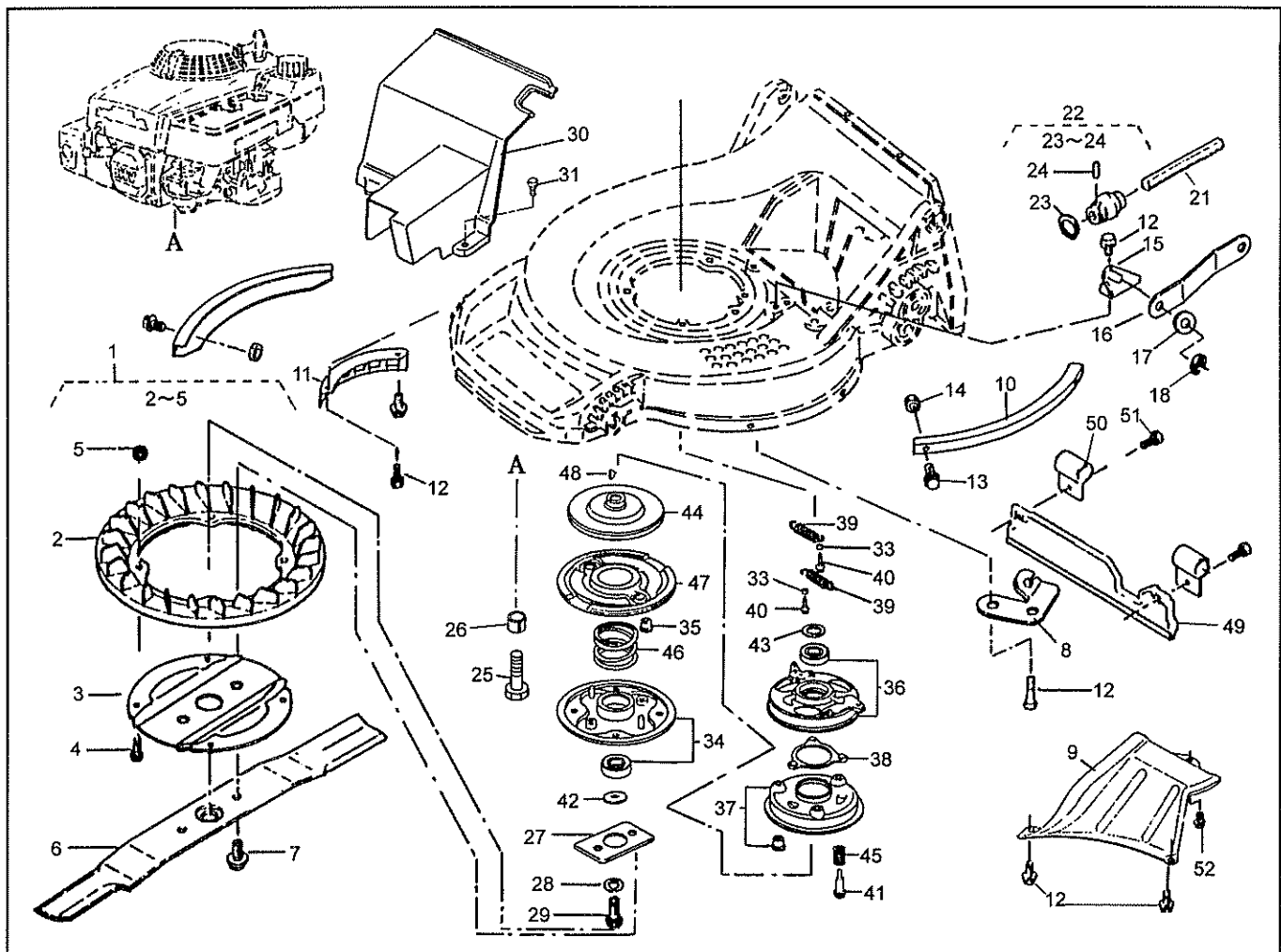


PARTS LIST

MODEL : SLM5360HXA-HST (SARP)

46014-183

| REF. No. | PARTS No. | | PARTS NAME | AI-WHEEL | | 2/2 | RECOMM.(%) Lot.100 | REMARKS |
|----------|-----------|--------|---------------------|------------------|----------|-----|-----------------------|---------|
| | | | | QTY INCLUDING | PRICE() | | | |
| 28 | 945L | 0349 | BEARING | 1 | | | 10 | |
| 29 | 31057 | 132 | HEXAGON BOLT | 2 | | | 5 | |
| 30 | 11150 | 102 09 | ADJUST LEVER | 2 | | | 5 | |
| 31 | 71158 | 102 | RATCHET ASSY(L) | 1 | | | - | |
| 32 | 11102 | 138 | HOLDER | 1 | | | 3 | |
| 33 | 68013 | 266 | SPRING | 1 | | | 5 | |
| 34 | 31034 | 170 | PIN | 2 | | | 3 | |
| 35 | 61003 | 112 | THRUST PLATE | 2 | | | 10 | |
| 36 | 31034 | 137 | PIN | 2 | | | 10 | |
| 37 | 68036 | 146 | WASHER | 2 | | | 3 | |
| 38 | 71122 | 102 | ADJUSTER ASSY(R) | 1 | | | - | |
| 39 | 11142 | 105 | ADJUSTER | 1 | | | 3 | |
| 40 | 945L | 0349 | BEARING | 1 | | | 10 | |
| 41 | 71158 | 101 | RATCHET ASSY(R) | 1 | | | 3 | |
| 42 | 11102 | 138 | HOLDER | 1 | | | 3 | |
| 43 | 68013 | 266 | SPRING | 1 | | | 5 | |
| 44 | 31034 | 170 | PIN | 2 | | | 3 | |
| 45 | 64014 | 234 | SHAFT | 1 | | | 3 | |
| 46 | 11113 | 292 | STAY | 1 | | | 3 | |
| 47 | 36068 | 171 46 | GUARD | 1 | | | 3 | |
| 48 | 342J | 0612 | FLANGE BOLT TAPPING | 2 | | | 3 | M6 × 12 |
| 49 | 68013 | 336 | SPRING | 1 | | | 3 | |
| 50 | 36065 | 298 09 | COVER | 1 | | | 3 | |
| 51 | 71137 | 194 | BOLT AND NUT SET | 1 | | | - | |
| 52 | 376L | 0508 | (+)TRUSS SCREW | 6 | | | 3 | M5 × 8 |
| 53 | 579L | 0500 | FLANGE NUT | 6 | | | 3 | M5 |
| 54 | 36006 | 113 | ABSORBER | 2 | | | 10 | |

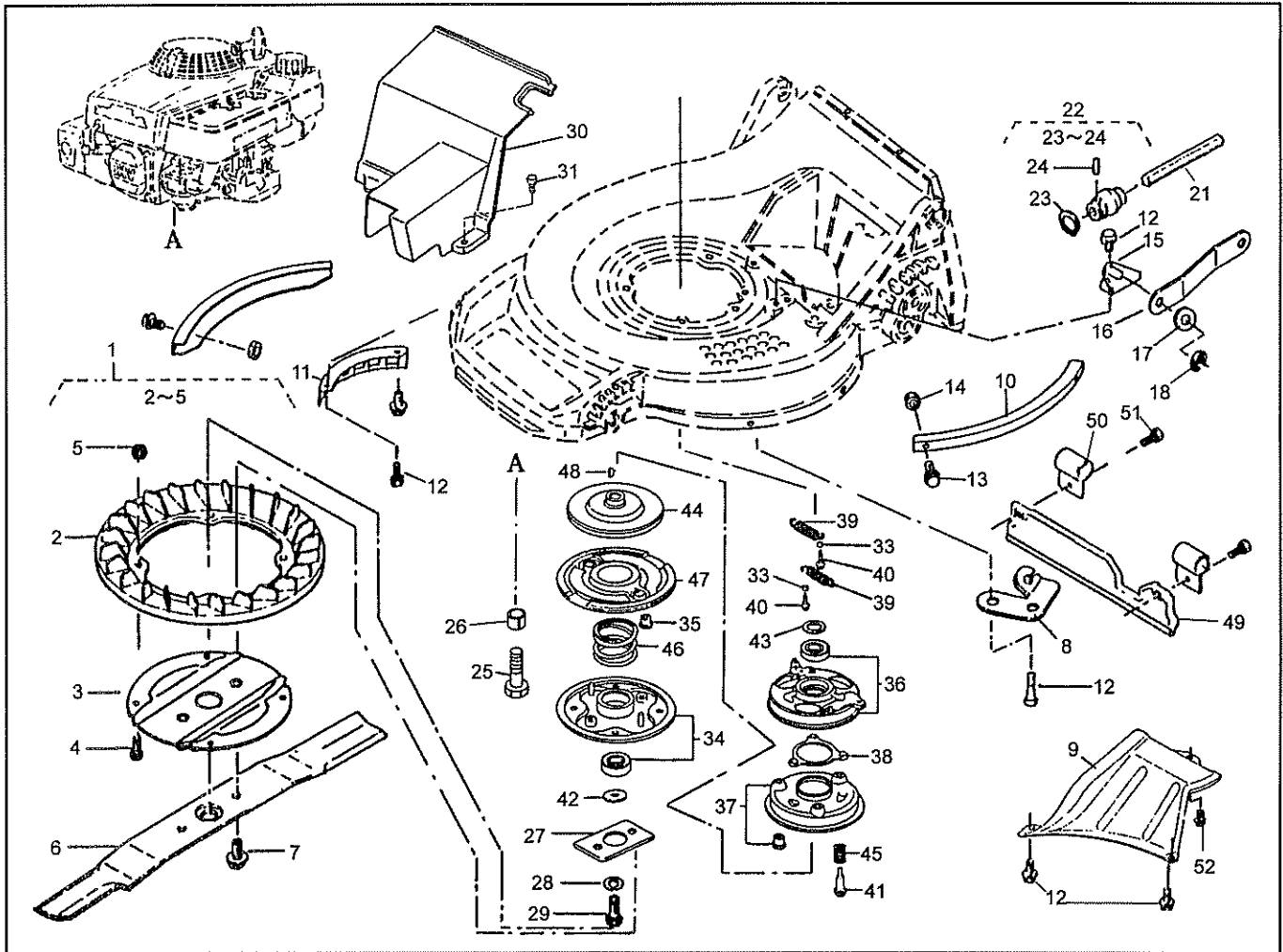


PARTS LIST

MODEL : SLM5360HXA-HST (SARP)

46014-183

| REF. No. | PARTS No. | PARTS NAME | GRASS-CUTTING | | | PRICE() | 1/2 | | REMARKS |
|----------|--------------|-----------------------|---------------|--|--|----------|------------|---------|---------|
| | | | Q'TY | | | | RECOMM.(%) | | |
| | | | INCLUDING | | | Lot.100 | | | |
| 1 | 71082 110 | FAN ASSY | 1 | | | - | | | |
| 2 | 51125 103 | FAN | 1 | | | 5 | | | |
| 3 | 11102 151 | HOLDER | 1 | | | 5 | | | |
| 4 | 335L 0620 | FLANGE BOLT | 4 | | | 5 | | M6 × 20 | |
| 5 | 569L 0600 | FLANGE NYLON NUT | 4 | | | 5 | | M6 | |
| 6 | 91014 159 | BLADE | 1 | | | 15 | | | |
| 7 | 31057 197 | HEXAGON BOLT | 2 | | | 15 | | | |
| 8 | 51002 118 | WIRE HOLDER | 1 | | | 3 | | | |
| 9 | 36065 300 | COVER | 1 | | | 10 | | | |
| 10 | 51090 117 09 | PROTECTOR | 2 | | | 5 | | | |
| 11 | 36065 180 | COVER | 1 | | | 3 | | | |
| 12 | 342J 0612 | FLANGE BOLT TAPPING | 8 | | | 3 | | M6 × 12 | |
| 13 | 335L 0610 | FLANGE BOLT | 4 | | | 5 | | M6 × 10 | |
| 14 | 512L 0600 | HEXAGON NUT | 4 | | | 3 | | M6 | |
| 15 | 11006 113 | STAY C.P. | 1 | | | 5 | | | |
| 16 | 91049 127 | CONNECTOR | 1 | | | 5 | | | |
| 17 | 611L 1000 | WASHER | 1 | | | 3 | | M10 | |
| 18 | 816V 0800 | E-SNAP RING | 1 | | | 5 | | φ8 | |
| 19 | | | | | | | | | |
| 20 | | | | | | | | | |
| 21 | 64014 334 | SHAFT | 1 | | | 3 | | | |
| 22 | 91097 101 | UNIVERSAL JOINT | 1 | | | 3 | | | |
| 23 | 812V 2000 | C-SNAP RING FOR SHAFT | 1 | | | 1 | | φ20 | |
| 24 | 717B 0418 | PARALLEL PIN | 1 | | | 5 | | φ4 × 18 | |
| 25 | 31057 243 | HEXAGON BOLT | 4 | | | 3 | | | |
| 26 | 61024 142 | SPACER | 3 | | | 3 | | | |
| 27 | 61024 169 | SPACER | 1 | | | 3 | | | |

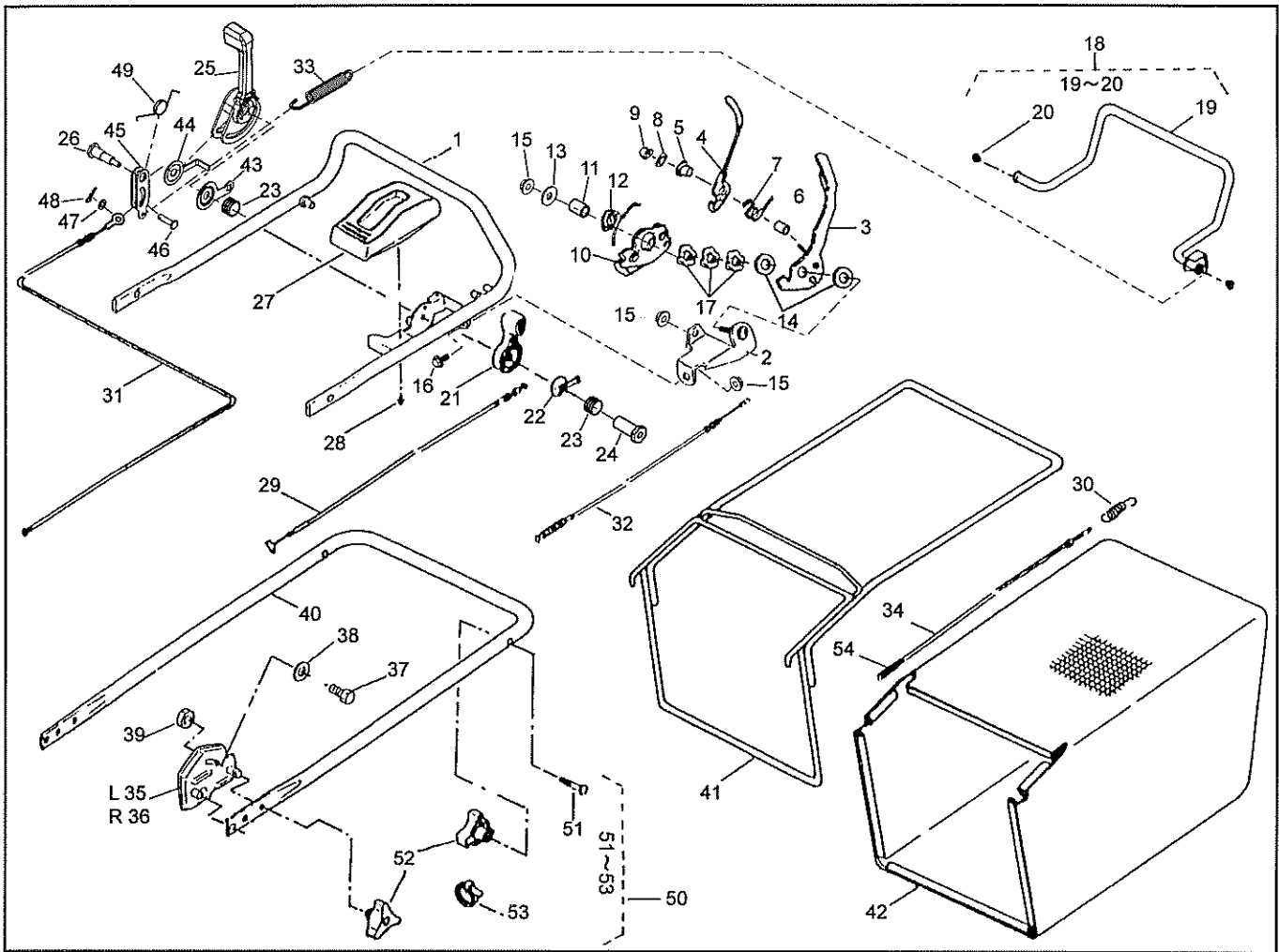


PARTS LIST

MODEL : SLM5360HXA-HST (SARP)

46014-183

| REF. No. | PARTS No. | PARTS NAME | GRASS-CUTTING | | PRICE() | 2/2 | | REMARKS |
|----------|---------------|-----------------------|---------------|--|----------|--------------------|--|---------|
| | | | QTY INCLUDING | | | RECOMM.(%) Lot.100 | | |
| 28 | 671V 1000 | CONICAL SPRING WASHER | 1 | | | 3 | | |
| 29 | 31057 196 | HEXAGON BOLT | 1 | | | 3 | | |
| 30 | 36065 397 | COVER | 1 | | | 3 | | |
| 31 | 342L 0616 | FLANGE BOLT TAPPING | 1 | | | 3 | | M6 × 16 |
| 32 | 71067 106 | BRAKE ASSY | 1 | | | - | | |
| 33 | 19512 883 000 | FAN COLLAR | 2 | | | - | | |
| 34 | 72600 VA4 010 | BLADE HOLDER ASSY | 1 | | | 3 | | |
| 35 | 72613 VA4 000 | BLADE HOLDER BUSH | 2 | | | 5 | | |
| 36 | 75090 VA4 030 | BALL CONTROL PLATE | 1 | | | 10 | | |
| 37 | 75100 VA4 010 | BRAKE C.P. | 1 | | | 3 | | |
| 38 | 75110 VA4 000 | BALL RETAINER C.P. | 1 | | | 10 | | |
| 39 | 75182 VA3 J00 | CLUTCH RETURN SPRING | 2 | | | 5 | | |
| 40 | 90014 952 000 | FLANGE BOLT | 4 | | | 3 | | |
| 41 | 90021 VA4 000 | SPECIAL BOLT | 3 | | | 3 | | |
| 42 | 90409 952 000 | WASHER | 1 | | | 3 | | |
| 43 | 90501 952 010 | THRUST WASHER | 1 | | | 3 | | |
| 44 | 75130 VA4 000 | DRIVE DISK | 1 | | | 3 | | |
| 45 | 75132 VA4 000 | BRAKE HOLDER SPRING | 3 | | | 5 | | |
| 46 | 75183 VA3 J00 | CLUTCH SPRING | 1 | | | 3 | | |
| 47 | 75150 VA3 J01 | DRIVEN DISK C.P. | 1 | | | 3 | | |
| 48 | 94401 16150 | WOOD RUFF KEY | 1 | | | 15 | | |
| 49 | 36046 147 | SAFETY GUARD | 1 | | | 3 | | |
| 50 | 11012 126 | HANGER BAND | 2 | | | 3 | | |
| 51 | 335L 0616 | FLANGE BOLT | 2 | | | 15 | | M6 × 16 |
| 52 | 342J 0610 | FLANGE BOLT TAPPING | 1 | | | 3 | | M6 × 10 |

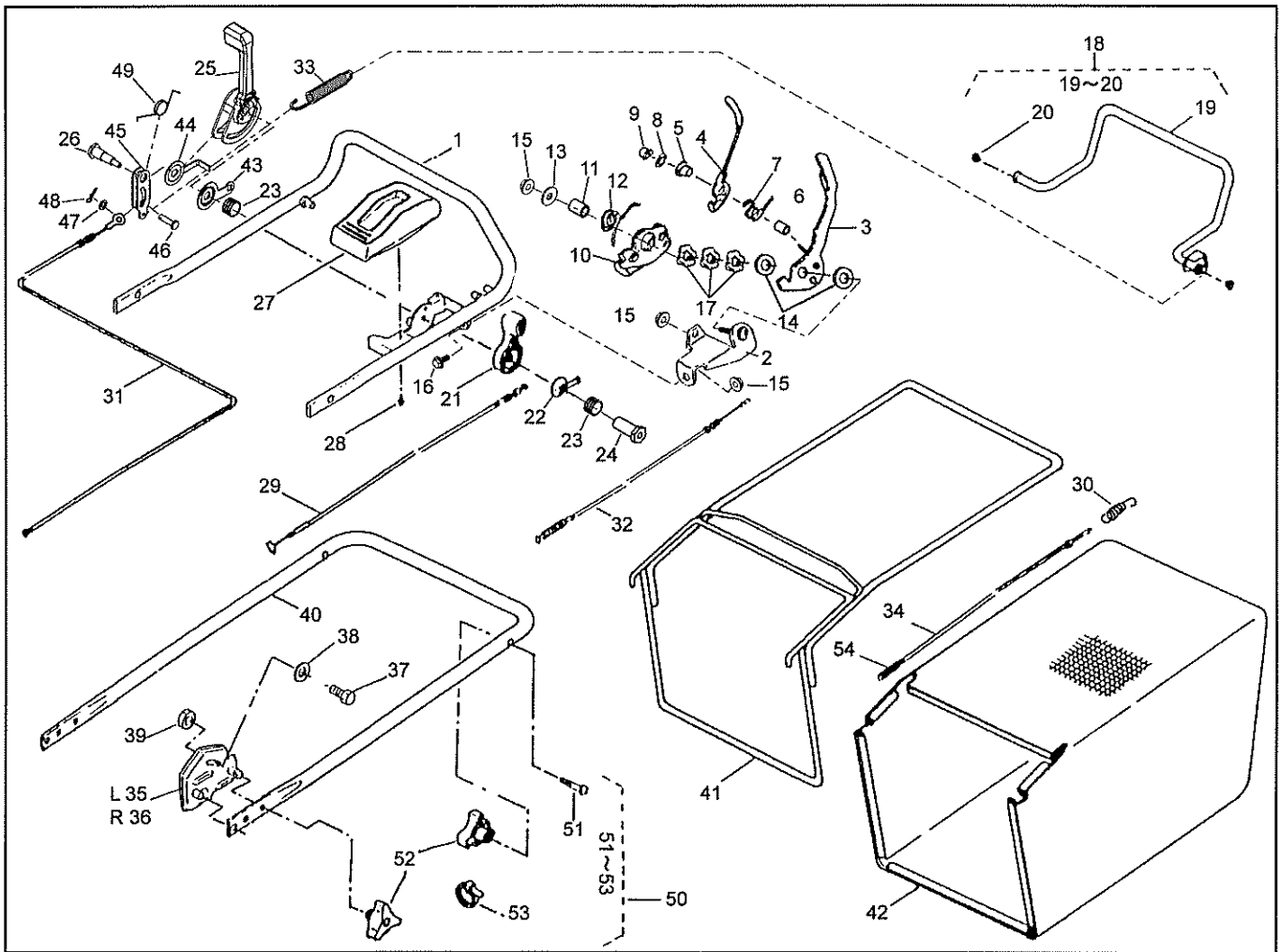


PARTS LIST

MODEL : SLM5360HXA-HST (SARP)

46014-183

| REF. No. | PARTS No. | | PARTS NAME | HANDLE | | | 1/2 | | RECOMM.(%) | REMARKS |
|----------|-----------|--------|--------------------|-----------|----------|---------|-----|--|------------|---------|
| | | | | QTY | PRICE() | Lot.100 | | | | |
| | | | | INCLUDING | | | | | | |
| 1 | 51027 | 242 | HANDLE | 1 | | | 3 | | | |
| 2 | 11113 | 396 09 | STAY | 1 | | | 5 | | | |
| 3 | 11095 | 160 09 | LEVER | 1 | | | 10 | | | |
| 4 | 11095 | 161 09 | LEVER | 1 | | | 10 | | | |
| 5 | 76007 | 131 | BUSH | 1 | | | 10 | | | |
| 6 | 61024 | 206 | SPACER | 1 | | | 5 | | | |
| 7 | 68013 | 334 | SPRING | 1 | | | 5 | | | |
| 8 | 68036 | 198 | WASHER | 1 | | | 3 | | | |
| 9 | 563L | 0600 | U-HEXAGON CAP NUT | 1 | | | 5 | | M6 | |
| 10 | 11109 | 108 | LINK | 1 | | | 5 | | | |
| 11 | 61024 | 207 | SPACER | 1 | | | 10 | | | |
| 12 | 68013 | 335 | SPRING | 1 | | | 10 | | | |
| 13 | 68036 | 262 | WASHER | 1 | | | 5 | | | |
| 14 | 68036 | 200 | WASHER | 2 | | | 5 | | | |
| 15 | 569L | 0800 | FLANGE NYLON NUT | 3 | | | 5 | | M8 | |
| 16 | 335L | 0820 | FLANGE BOLT | 1 | | | 3 | | M8×20 | |
| 17 | 664J | 1600 | WAVE SPRING WASHER | 3 | | | 3 | | M16 | |
| 18 | 71161 | 111 09 | LEVER ASSY | 1 | | | - | | | |
| 19 | | | LEVER | 1 | | | - | | | |
| 20 | 76007 | 131 | BUSH | 2 | | | 15 | | | |
| 21 | 91010 | 169 | THROTTLE LEVER | 1 | | | 10 | | | |
| 22 | 61003 | 113 | THRUST PLATE | 1 | | | 5 | | | |
| 23 | 68013 | 356 | SPRING | 2 | | | 3 | | | |
| 24 | 31058 | 168 | HEXAGON NUT | 1 | | | 5 | | | |
| 25 | 11095 | 162 | LEVER (HST) | 1 | | | 5 | | | |
| 26 | 31057 | 249 | BOLT | 1 | | | 5 | | | |
| 27 | 71900 | 811 | COVER ASSY | 1 | | | 3 | | | |



PARTS LIST

MODEL : SLM5360HXA-HST (SARP)

46014-183

| REF. No. | PARTS No. | PARTS NAME | HANDLE | | | 2/2 | RECOMM.(%) Lot.100 | REMARKS |
|----------|-----------|-------------------------------|-----------|----------|--|-----|-----------------------|---------|
| | | | QTY | PRICE() | | | | |
| | | | INCLUDING | | | | | |
| 28 | 470L 0514 | (+)-TAPPING SCREW | 2 | | | 3 | M5 × 14 | |
| 29 | 91001 233 | THROTTLE WIRE (GXV120/GXV160) | 1 | | | 10 | | |
| 30 | 68013 161 | SPRING | 1 | | | 5 | | |
| 31 | 91003 167 | CONTROL CABLE (HST) | 1 | | | 5 | | |
| 32 | 91003 144 | CONTROL CABLE (BBC) | 1 | | | 15 | | |
| 33 | 68013 360 | SPRING | 1 | | | 3 | | |
| 34 | 91003 166 | CONTROL CABLE | 1 | | | 5 | | |
| 35 | 51116 132 | HANDLE BRACKET (L) | 1 | | | 3 | | |
| 36 | 51116 133 | HANDLE BRACKET (R) | 1 | | | 3 | | |
| 37 | 312M 0830 | HEXAGON BOLT(SW) | 2 | | | 3 | M8 × 30 | |
| 38 | 68036 101 | WASHER | 2 | | | 3 | | |
| 39 | 512L 0800 | HEXAGON NUT | 2 | | | 3 | M8 | |
| 40 | 51027 150 | HANDLE | 1 | | | 3 | | |
| 41 | 11062 143 | FRAME C.P. | 1 | | | 10 | | |
| 42 | 36098 136 | GRASS BAG C.P. (BLACK) | 1 | | | 15 | | |
| 43 | 11049 108 | SLIDE PLATE | 1 | | | 3 | | |
| 44 | 61003 118 | THRUST PLATE | 1 | | | 3 | | |
| 45 | 11109 109 | LINK | 1 | | | 3 | | |
| 46 | 31056 128 | GIB-HEADED PIN | 1 | | | 5 | | |
| 47 | 613L 0600 | WASHER | 1 | | | 3 | | |
| 48 | 733L 0600 | SNAP PIN | 1 | | | 5 | | |
| 49 | 68013 358 | SPRING | 1 | | | 3 | | |
| 50 | 71052 119 | BOLT SET | 1 | | | - | | |
| 51 | 31057 134 | BOLT | 2 | | | 3 | | |
| 52 | 36061 118 | KNOB | 4 | | | 3 | | |
| 53 | 68028 103 | WIRE BAND | 2 | | | 3 | | |
| 54 | 68013 364 | SPRING | 1 | | | 5 | | |